

Solarspot® D-38

Tubular daylighting system

This mid-sized system is designed for small domestic applications and smaller areas of commercial buildings. The D-38 will fit into most building structures avoiding structural alterations thanks to its diameter of Ø380 mm.

Solarspot® D-38 Application examples

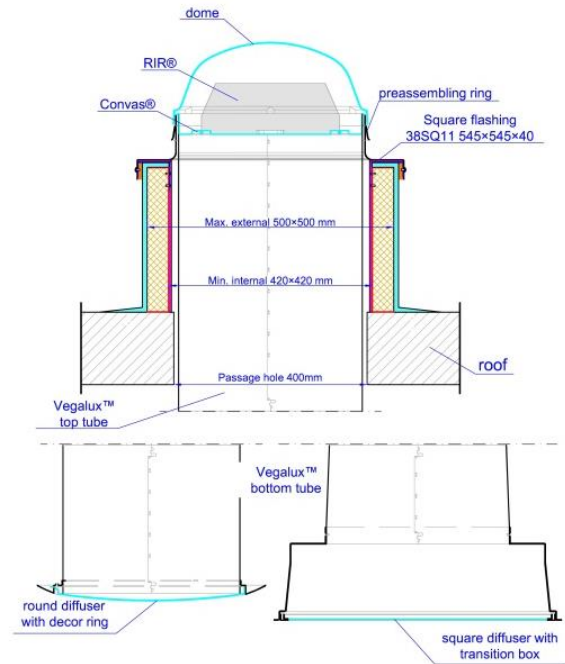
- Kitchens, living rooms, walk-in closets
- Studies, workshops, offices, classrooms
- Larger corridors and stairwells
- Bathrooms and service spaces

Solarspot® D-38 Components and accessories

- Available in two-tube base kits 300+300 mm
- Elongation tubes available; 300, 400, 600 and 1200 mm
- Electronic light regulator Dimmer NOTTEDI™
- Combined ventilation systems
- **LEDSOLARSPOT®** combined intelligent LED options
- Full range of round or square diffusers
- Full range of flashings (roof exits)

Solarspot® D-38 System benefits

- Convax® anticondensation tray for superior thermal performance
- Optical device RIR® (optical funnel) for increased daylight capture in all light conditions (clear sky / overcast sky)
- Vegalux2™ elongation tubes and angle adapters
- All systems supplied fully assembled for a fast and easy installation (excludes extension tubes)



System specifications - Solarspot® D-38

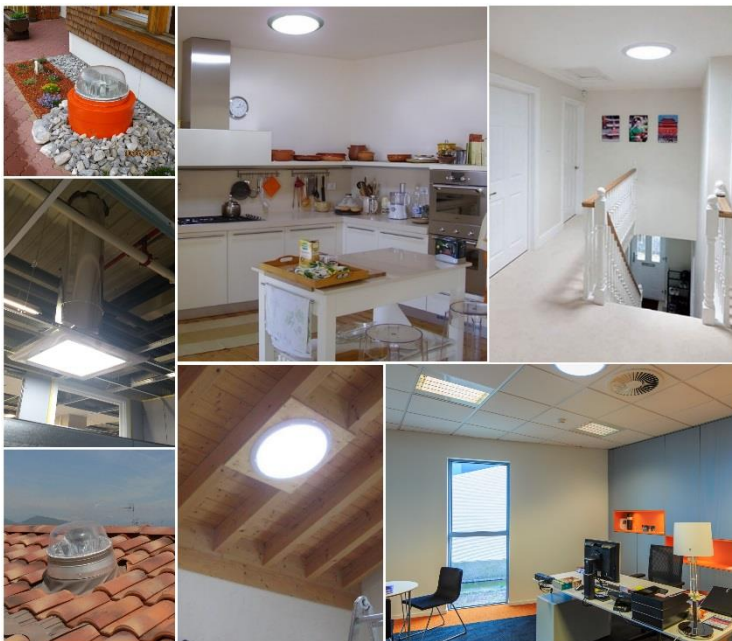
Tube diameter	380 mm
Recommended for areas up to	20 m ² /unit
Potential tube length	~15 m

Dome in acrylic polymer, UV resistant, anti-choc, anticondensation tray Convax® and optical device RIR®, Vegalux2™ elongation tubes, Flashings in aluminum or PVC



Wide range of diffusers available

Round with or without ceiling ring
With round/square transition box for false ceilings



SOLARSPOT® D-38 is available with a range of flashings suitable for any type of roofing