

Solarspot® D-90

Tubular daylighting system

This system is designed for larger areas or buildings with high ceiling levels generally like those used for manufacturing, retail or warehousing. The system can be used singly or in multiples to light larger areas where access to natural light is restricted. The D-90 requires minimum ceiling heights of around 8 m and structural reinforcement according to roof structure, and it will light an area of up to 95sqm.

Solarspot® D-90 Application examples

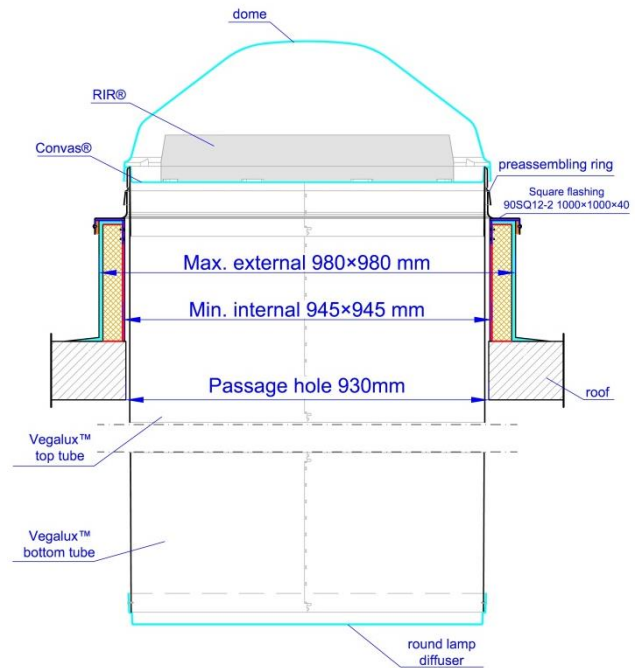
- Foyers and atrium spaces
- Commercial center thoroughfares
- Larger corridors, stairwells
- Manufacturing and warehousing
- Retail sheds

Solarspot® D-90 Components and accessories

- Available in one- and two-tube base kits from 400+400 mm to 1200 mm long
- Elongation tubes available; 300, 400, 600 and 1200 mm
- **LEDSOLARSPOT®** combined intelligent LED options
- Full range of round or square diffusers
- Full range of flashings (roof exits)

Solarspot® D-90 System benefits

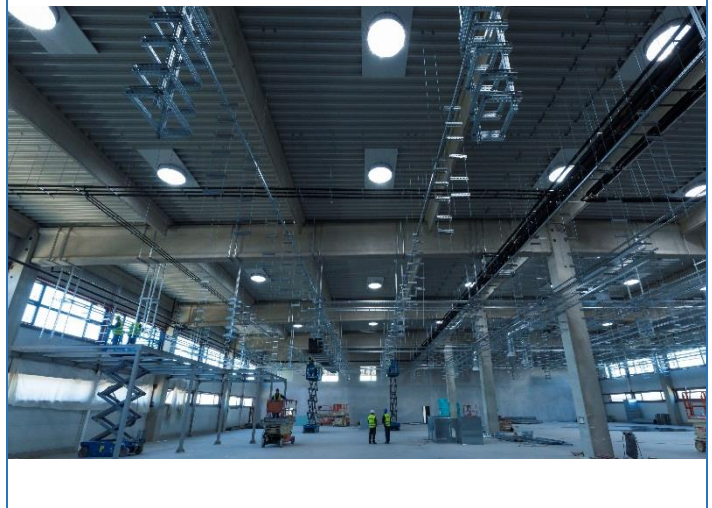
- Canvas® anticondensation tray for superior thermal performance
- Optical device RIR® (optical funnel) for increased daylight capture in all light conditions (clear sky / overcast sky)
- Vegalux™ elongation tubes and angle adapters
- All systems supplied fully assembled for a fast and easy installation (excludes extension tubes)



System specifications – Solarspot® D-90

Tube diameter	900 mm
Recommended for areas up to	95 m ² /unit
Potential tube length	~30 m

Dome in acrylic polymer, UV resistant, anti-choc, anticondensation tray Canvas® and optical device RIR®, Vegalux2™ elongation tubes, Flashings in aluminum



Available round lamp diffuser

SOLARSPOT® D-90 is available with round aluminum flat flashings or square aluminum seamless flashings for installation on square supports